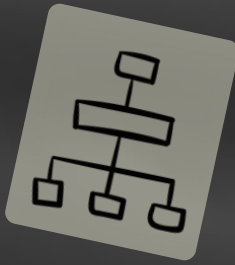
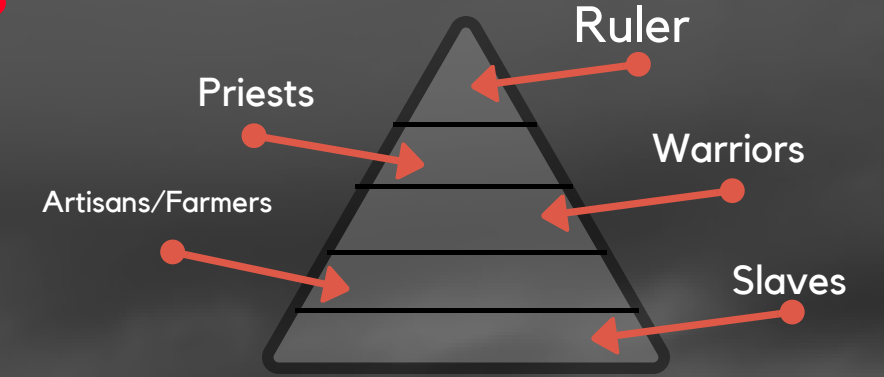


GOVERNMENT



GOVERNMENT WAS IMPORTANT AS IT ALLOWED FOR BETTER ORGANIZED SOCIETIES, A SET CURRENCY & ORGANIZED DEFENSES.

SOCIAL STRUCTURE WAS IMPORTANT AS IT ALLOWED FOR EASIER ARRANGEMENT OF PEOPLE, AS WELL AS BETTER GOVERNING OF POPULATION.

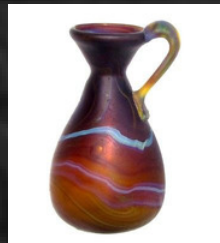


SOCIAL STRUCTURE

IRONWORKING WASA TYPE OF ART FORMULATED INTO EVERYDAY LIFE.



ART



Hittite, Babylon and Assyrian Empires

CITIES



CITIES WERE PLACES WERE LARGE POPULATIONS STAYED. THEY TYPICALLY HAD AN ABUNDANCE OF RECOURCES AND THEY WERE CENTERS OF TRADE. THEY ALSO WERE FREQUENTLY EXPANDED.

WRITING WAS USEFUL FOR KEEPING ACCURATE RECORDS AND KEEPING TRACK OF RECORCES. THE EARLIEST ALPHABETS HAD LETTERS REPRESENTING SPECIFIC SOUNDS.

W Waw	H Heth	D Daleth	G Gimel	B Beth	?
K Kaph	Y Yodh	T Teth	HH Heth	Z Zayin	
P Peth	S Seth	N Nun	M Mem	L Lamedh	
T Teth	L Lamedh	T Teth	SH Shin	RR Resh	Q Qoph
S Sin	YH Yodh-Heth	+	+	+	+

Syriac Alphabet Estrangela

WRITING

RELIGION



ZOROSTER UNITED THE KINGDOM BY PUSHING FORWARD THE BELIEF OF THE GODS "AHURA MARDA", WHICH REPRESENTED GOOD, AND "AHRIMA", WHICH REPRESENTED EVIL.

